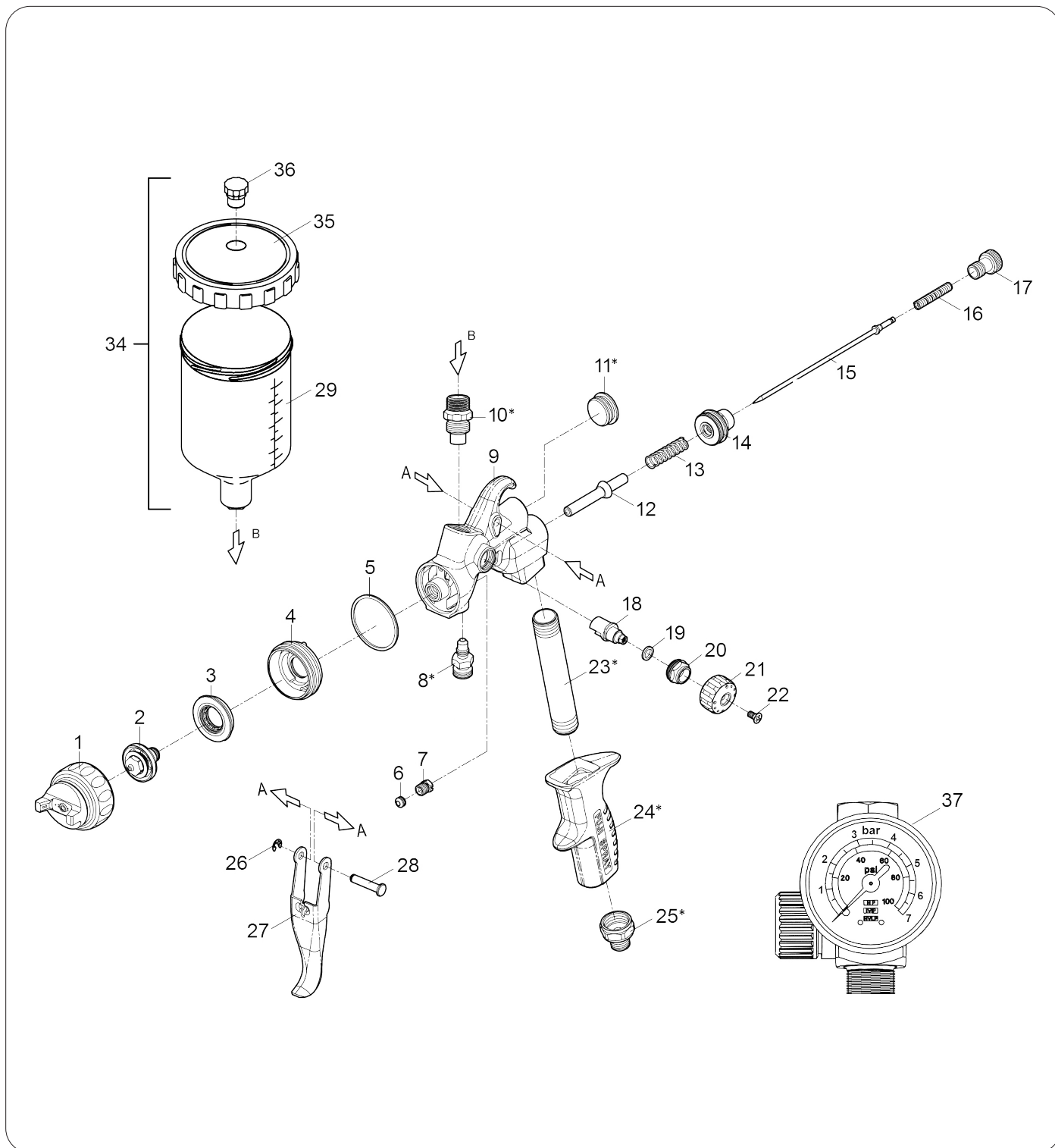


PARTS DIAGRAM

LX-20™



PARTS DIAGRAM

LX-20™

ITEM	PART	NAME	NOTE
1	-	Air Cap & Collar	*
2	-	Fluid Nozzle	*
3	6303	Air Distributor	**
4	6204	Air Diffuser	**
5	6305	Air Diffuser Seal	**
6	6306	Needle Packing	**
7	6307	Needle Packing Nut	**
8	-	Fluid Coupler - Pressure Fed	X
9	-	Gun Body	X
10	-	Fluid Coupler - Gravity	X
11	-	Rear Barrel Plug	X
12	6312	Spindle Valve	**
13	6313	Valve Spring	**
14	6314	Fluid Screw Nut	**
15	-	Needle	*
16	6316	Needle Spring	**
17	6217	Fluid Control Knob	**
18	6318	Air Deflector	***
19	6319	Deflector Seal	***
20	6320	Control Knob Nut	***
21	6221	Pattern Control Knob	***
22	6322	Locking Screw	***
23	-	Handle Tube	X
24	-	Handle	X
25	-	Air Connector	X
26	6326	Trigger Retaining Ring	
27	6327	Trigger	
28	6328	Trigger Pin	

NOTE

(X) Part not to be removed

(*) Part only available together as a full Air Cap Set (#6200LX-)

(**) Part available with Rebuild Kit (#6282)

(***) Part available in Pattern Control Assembly (#6283)