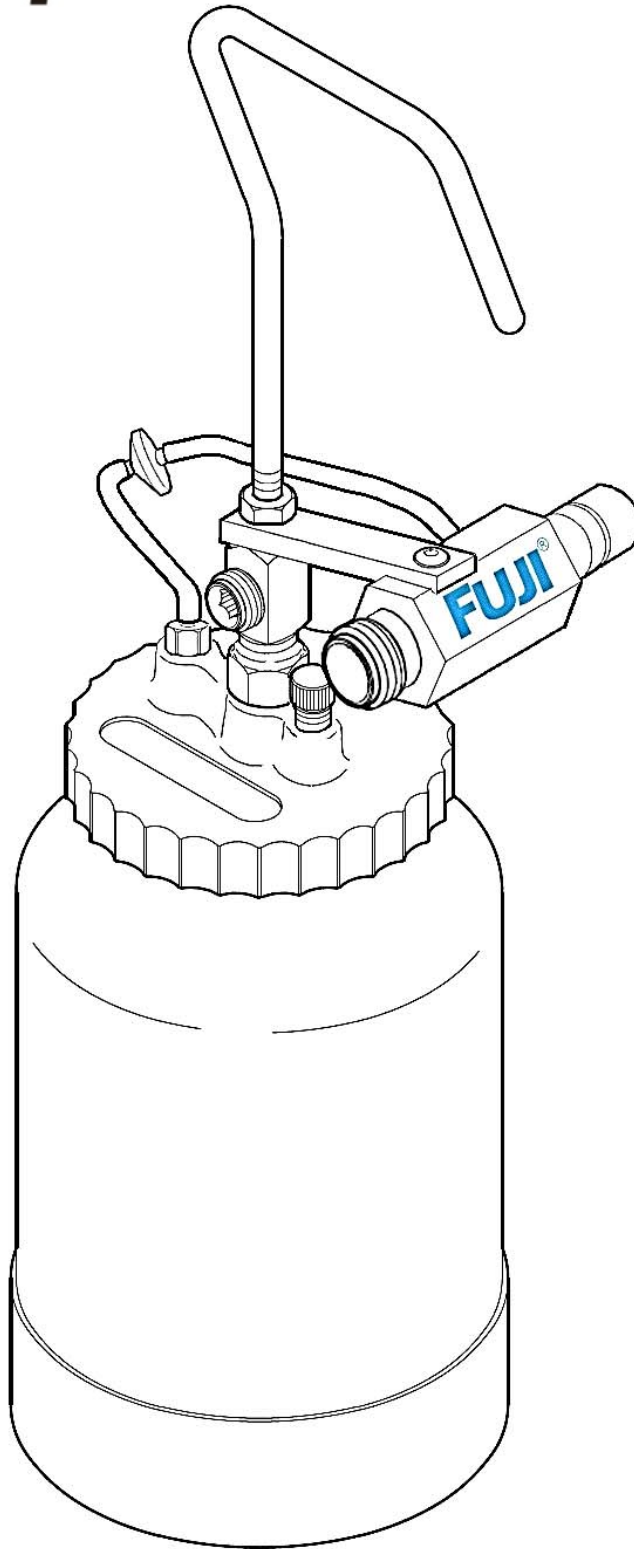




## 2 Quart Pressure Pot

For use with Fuji Spray® HVLV Turbines



40 Magnetic Drive, #48, Toronto, Ontario M3J 2C4

Tel: (416) 650-1430 Toll free: 800-650-0930 Email: info@fujispray.com

The Fuji Spray 2-Quart Pressure Pot (part # 5432) is compatible for use with any Fuji Spray 4-Stage Turbine or 5-Stage Turbine unit.

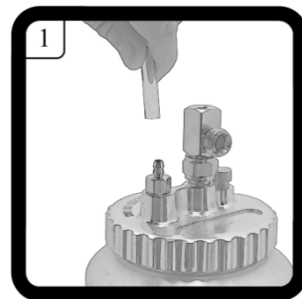
For the proper assembly and operation of this 2Qt. Pressure Pot Kit, **you will also** need a 6ft Whip Hose (part # 2049F or # 2268)

Your Fuji Spray 2-Quart Pressure Pot System is packaged with the following:

- 1 x 2-Quart Pressure Pot Assembly
- 1 x Air Connector
- 1 x 6' Material Fluid Hose
- 1 x Air Pressure Tube with Check Valve
- 1 x Quick-Connect Coupler
- 5 x Nipple Caps
- 3 x Velcro Straps

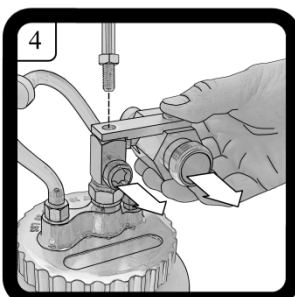
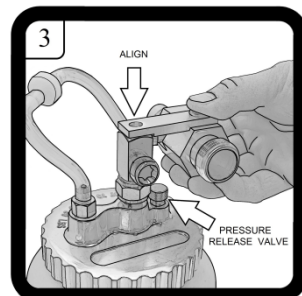
### ASSEMBLY:

1. Attach one end of Air Pressure Tube # 8 to Nipple on Pressure Pot Lid # 7.



2. Attach other end of Pressure Tube to Nipple on Air Connector # 3.  
NOTE: Air Pressure Tube # 8 has a one-way Check Valve installed. The airflow direction must be from Air Connector towards the Pressure Pot. The tapered side of the Check Valve must point towards the pressure pot.

3. Position the hole of Air Connector Bracket # 3 to align with the Fluid Coupler # 4 and ensure that the Air Pressure Tube does not kink. **Once the Air Connector is in place, it must be fastened directly above Pressure Release Valve # 9.**



4. Secure Air Connector Bracket to Fluid Coupler by inserting the threaded end of the Hook # 1. Tighten locking nut # 2. Both Fluid Coupler and Air Hose Outlet of the Air Connector must be pointing toward the same direction after installation is complete.

## **SRAY GUN ASSEMBLY:**

### **Bottom Feed**

Compatible with all Fuji Spray Bottom Feed Gun models.

1. Using a wrench, loosen and detach Cup Assembly # 2042 by turning the Securing Nut counter-clockwise.
2. Disconnect the Pressure Tube # 2024 from the Spray Gun, and attach supplied Nipple Cap # 5411 in its place.

### **Gravity Feed**

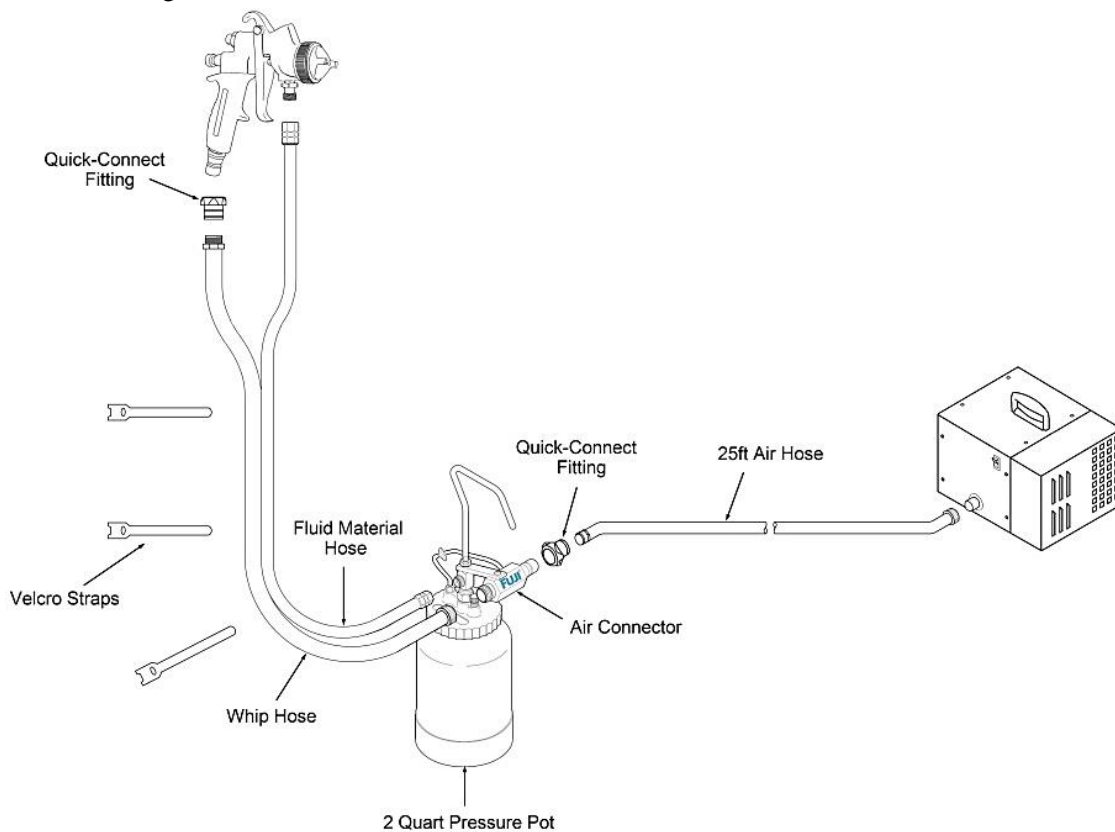
Compatible with all Fuji Spray Gravity Feed Gun models.

NOTE: For Models 9600-G and GT-X2, you must purchase the L-Fitting (part # 9060) Accessory.

1. Using a wrench, loosen and detach Cup Assembly by turning the Securing Nut counter-clockwise.
2. Disconnect the Pressure Tube from the Spray Gun, and attach supplied Nipple Cap # 5411 in its place.
3. For Models 9600-G and GT-X2, connect the L-Fitting accessory to the Fluid Coupler.

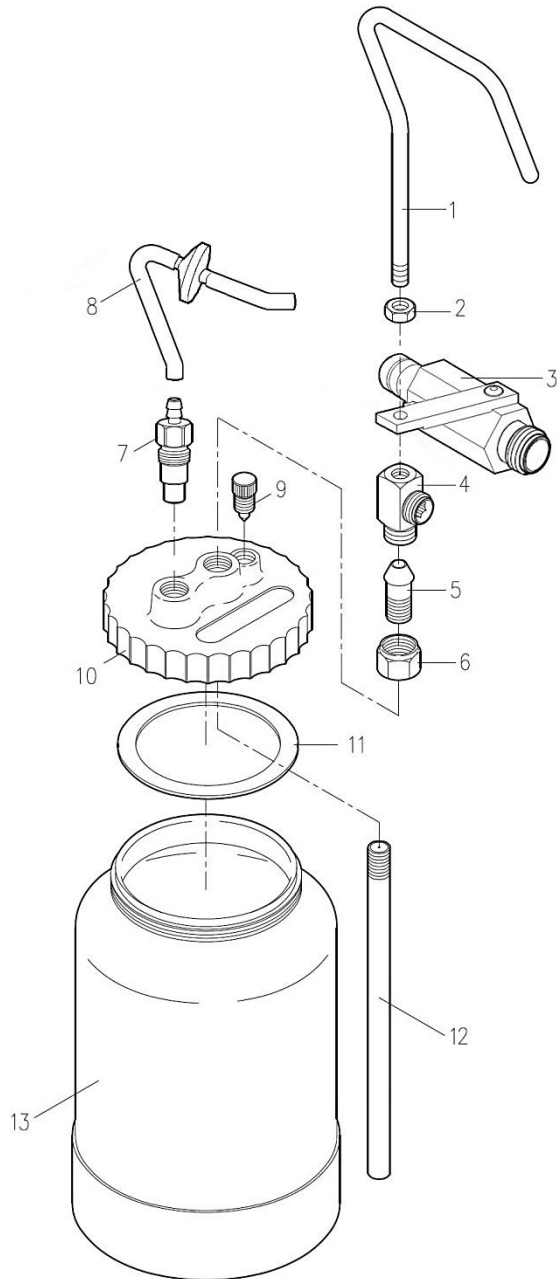
## **HOSE CONNECTION:**

1. Attach supplied Fluid Hose from Pressure Pot to Spray Gun.
- 2 Attach one end of Whip Hose (not included) to air connector #3. Attach the other end together with Quick-Connect to Gun Handle.
3. Use the supplied Velcro Straps to fasten both the Whip Hose and Material Fluid hose together.
4. Attach 25ft hose from the Turbine unit to Pressure Pot's Air Connector inlet using the Hose's existing Quick-Connect Fitting.



**2Qt. Pressure Pot Assembly**

**(Part # 5432)**



1. Hook
2. Locking Nut
3. Air Connector Assembly
4. Fluid Coupler
5. Center Post
6. Center Post Nut
7. Threaded Nipple
8. Pressure Tube / Check Valve
9. Pressure Release Valve
10. Lid
11. Gasket
12. Pickup Tube
13. Pot